

A SHIP DESIGNED TO DEPART
FROM THE EXPECTED

Celebrity ED CE OF EUROPE

Celebrity **X** Cruises®

SAIL BEYOND BORDERS

It's more than the ultimate cruise ship. It's a game changer.

Celebrity EdgeSM is about to change everything.

The way you experience the world; the way you connect with the ocean; the way you play, dine and unwind at sea. The way you cruise will never be the same again.

She's the first ever ship to be created in 3D – meaning every detail was fine-tuned to perfection. And no expense was spared when selecting her multi-award-winning design team, which includes world-renowned interior designer, Kelly Hoppen MBE.

With wide open spaces, accommodation that brings the outside in with fully retracting glass doors which open out onto your balcony; and an abundance of floor to ceiling windows – **Celebrity Edge opens up the world from the inside out.**

She's the ultimate outwardly facing cruise ship.

We'll be introducing Celebrity Edge to the world with a choice of exclusive 7-night Caribbean itineraries throughout winter 2018/19. Closer to home, Celebrity Edge will offer a range of 7-, 10- and 11-night sailings out of Rome and Barcelona for 2019, including an exclusive sailing direct from Southampton.

From Valencia to Valletta and Monaco to Mykonos – with longer stays at every destination, you'll uncover more of Europe in every direction – as well as two brand new ports of call; Nauplion on Greece's Argolis Peninsula and Santa Margherita on the Italian Riviera.

Are you ready to go where cruising has never gone before?

Our two-storey Edge Villas are the first of their kind in the fleet.

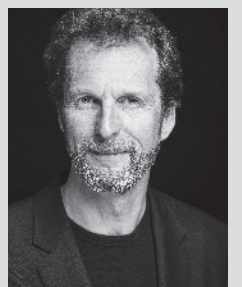
DESIGN MATTERS #01

Meet our multi-award-winning design team

Our visionary approach to the architecture of Celebrity Edge is only one aspect of this revolutionary story. We selected designers who were new to the cruise industry, because we wanted to ensure every aspect of Celebrity Edge would be a departure from traditional thinking about cruising.



Multi-award-winning interior designer, Kelly Hoppen MBE



Internationally-acclaimed architect, Tom Wright

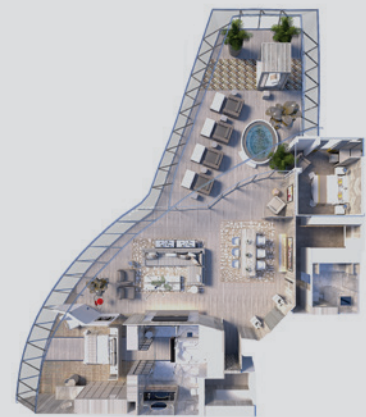


World-renowned designer, Patricia Urquiola

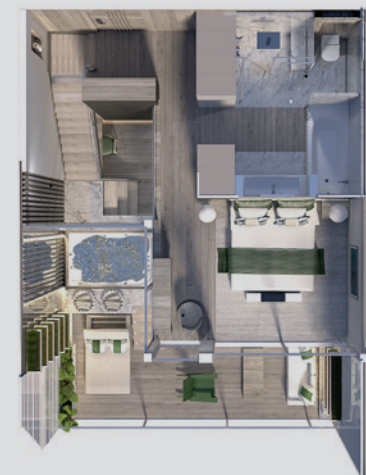


Celebrity Edge Design Ambassador, Nate Berkus

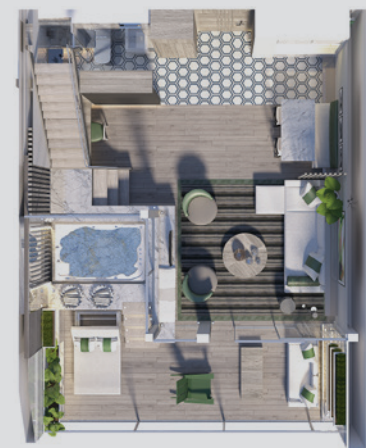
It's the details that create the big picture



Iconic Suite



Edge Villa – upper level



Edge Villa – lower level

DESIGN MATTERS #02

Home to the 'suiteest' accommodation at sea.

At Celebrity Cruises® we continually set new standards in luxury accommodation. And we've raised the bar even higher with Celebrity EdgeSM, adding two new types – Iconic Suites and Edge Villas. Suite Class is the utmost level of accommodation with its extensive range of added extras:

- Personal butler
- Private restaurant
- Exclusive private lounge and sun deck
- Priority everything
- Plus much more

ICONIC SUITES

Your ultimate home away from home, our Iconic Suites are the most indulgent and spacious in the fleet:

- Positioned above the bridge offering panoramic views
- Each is an expansive 1,880 square feet, excluding outdoor space which includes a private hot tub
- Space for up to 6 guests
- Two bedrooms and two bathrooms

EDGE VILLAS

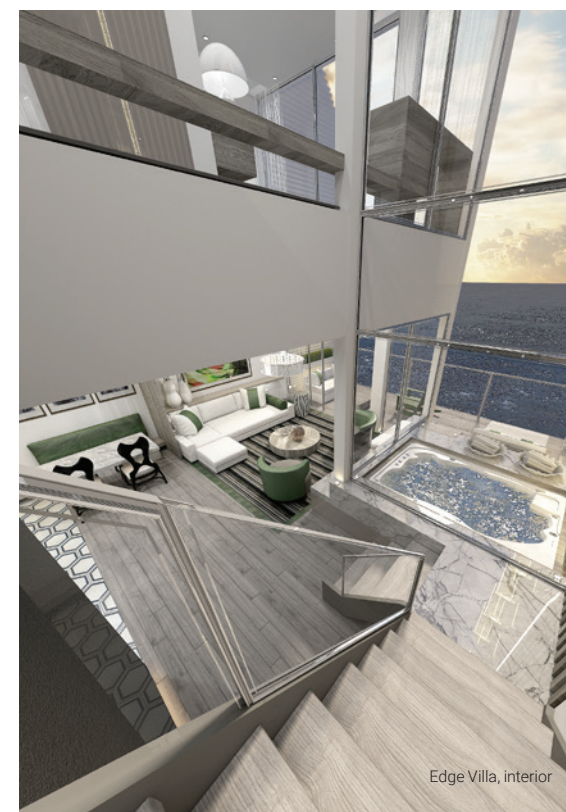
Our second new suite category, the Edge Villas, are a first of their kind in our fleet:

- 950 square feet of two-storey, indoor-outdoor splendour
- Private terrace with three feet deep plunge pool
- Direct access to a new area exclusively for Suite Class guests, The Retreat

THE RETREAT

Rivalling any high-end resort, The Retreat is an exclusive private paradise for Suite Class guests comprising indoor and outdoor areas:

- The Retreat Sun Deck offers a full sized pool, hot tub and dedicated Pool Butlers
- Take in live entertainment at The Retreat Lounge, open 24/7
- Dine in elegance at The Retreat Restaurant, Luminae

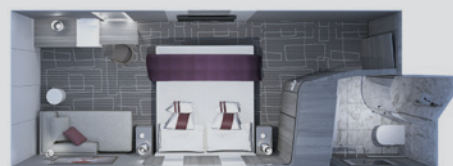


Edge Villa, interior



The Retreat Sun Deck

Accommodation to suit everyone



Interior Stateroom



Ocean View Stateroom



Edge Stateroom with Infinite Balcony



Edge Single Stateroom with Infinite Balcony

DESIGN MATTERS #03



Bringing the outside in for a naturally bigger room.

Internationally renowned Interior Designer Kelly Hoppen MBE took the lead on the design of all Celebrity Edge's accommodation – bringing her warm, harmonious palette to the rooms that serve as your very own spacious sanctuary and more.

Rooms (or staterooms as we call them) are spacious on all of our ships. But on Celebrity EdgeSM we made almost 70% of them even larger. Plus our new Edge Staterooms offer Infinite BalconiesSM – fully-retractable floor-to-ceiling glass doors that transform your entire living space into the balcony, letting you walk right out to the water's edge. Never before seen at sea – they're a first for us, and in the cruise industry, seamlessly blending inside and outside living space at the touch of a button.

And that's for starters; **every single detail is revolutionary:**

- Rooms are even more spacious
- Our new Cashmere CollectionSM bedding features handcrafted, cashmere mattresses from Italy
- Bathrooms are more luxurious than ever before
- We've introduced the very latest technology. Allowing you to control everything from lighting, to curtains, to temperature, and service with a simple touch screen

Holidaying on your own?

We've introduced our brand new Edge Single Staterooms with Infinite BalconiesSM – perfectly proportioned for the individual traveller, multi-generational or extended families who'd like their own space, or even nannies. They offer all the same amenities and services as our double staterooms, feature a queen-sized bed and are even available as connecting rooms.

A resort worthy of Edge status.

On Deck 14 you'll find endless ways to enjoy the outdoors and connect with the sea. Or as we call it, The Resort Deck. Internationally-acclaimed architect, Tom Wright, worked his magic on a wide variety of spaces here, which includes the main pool area, the new Rooftop Garden, the jogging track, and the adults-only Solarium.

The Rooftop Garden

Full of unexpected pleasures day and night, The Rooftop Garden is a living urban playscape inspired by childhood playgrounds. Catch a movie at A Taste of Film (our unique food & film pairings); dance the night away to a live band; dine at the Rooftop Garden Grill.

Pool Deck

With oversized art installations, two 2 storey Martini-Glass hot tubs; and spacious private Cabanas, The Pool Deck is a spectacular space with a distinct resort-style atmosphere.

Pool Bar

Situated alongside the lap pool and underneath a grand installation wall is the Pool Bar. A serene spot to relax, sip your favourite cocktail and take in your stunning surroundings.

Solarium

On The Resort Deck you'll find the blissful adults-only Solarium. Featuring a 3-dimensional art wall that represents the beautiful colours and movement of the ocean, it's the perfect complement to the serene onboard atmosphere.



It's not just revolutionary.
It's magical.

Magic Carpet

The Magic Carpet is the highlight of our outward facing vision. The size of a tennis court, and reaching heights of 13 storeys above sea level, it is the world's first cantilevered, floating platform that travels up the side of the ship. Offering some of the best views on board, this spectacular space extends several decks and transforms into a new venue depending on which deck it's positioned.



Magic Carpet, detail

This is the place to soar over the open ocean while dining, enjoying a drink, or simply relaxing.

- **Down to Deck 2**, the Magic Carpet becomes an extension of the Destination Gateway – a state-of-the-art embarkation station where you'll be whisked away to tendered ports of call aboard our newly reimagined tender boats.
- **While on Deck 5** it serves as an unforgettable open air dining experience that makes fresh ocean fare taste even fresher.
- **On Deck 14**, the Magic Carpet becomes an extension of the relaxing main pool area – with breathtaking views as a backdrop and live music in the air, it's the perfect place to unwind with family or friends.
- **At its highest point on Deck 16**, the Magic Carpet becomes a sky-high venue for an array of mouthwatering experiences such as Dinner on the Edge. Prepare for a unique, al fresco culinary journey that will delight your tastebuds, sight, and sense of wonder, all at the same time.



Eden Restaurant, night



Eden, day

Welcome to Eden. Chillful. Playful. Sinful.

We invite you to indulge every sense in a space that transforms from **chillful mornings** to **playful afternoons** to **sinful evenings**.

Situated over Decks 3, 4 and 5, and the same height as New York's colossal Apple Store, Eden is by far the grandest space we've ever designed. In fact, it has more outward facing glass than any other room at sea, making it a true window to the world.

A place where nature is effortlessly intertwined with design and performance art, and where nature is so present, we call it 'a room that lives'. It's a multi-faceted and innovative experience; and no two visits are ever the same. From the awakening aromas rising from

Eden Café to the natural scents of the Library of Plants growing above Eden Bar; from the divine, experiential cuisine at Eden Restaurant to the crescendo of theatrics that close the night while delighting your eyes and ears.

Early evening brings Eve at Eden, a sensuous mix of performance art, while at dinner, the Eden Restaurant promises a choreographed series of delicious temptations to surprise and delight – along the lines of the soon-to-reopen New York dinner theatre, Queen of the Night. Eve at Eden isn't just a nightclub or a social club. It's an indulgently sinful fusion of performance art, culinary treats, and nightlife that will ignite the senses.



Eden, night



We're changing the world, starting with the Caribbean.

After the two-year design period was complete, the question remained, "Where will we go with Celebrity EdgeSM first?" With an incredible ship designed to highlight the destinations, we decided to start in the corner of the world so often referred to as 'paradise' – the Caribbean. Celebrity Edge offers sun-soaked Eastern and Western Caribbean itineraries from Fort Lauderdale, Florida. But why choose just one? See it all by booking back-to-back sailings for a 14-night luxurious journey.

The minute you set sail, you'll feel completely connected to the islands around you – and every shimmering nautical mile of sea that connects them.

7-NIGHT WESTERN CARIBBEAN

Departing from Fort Lauderdale, Florida

Day	Visiting
1	Fort Lauderdale, Florida
2	Key West, Florida
3	At sea
4	Costa Maya, Mexico
5	Cozumel, Mexico
6	George Town, Grand Cayman
7	At sea
8	Fort Lauderdale, Florida

Sailing dates
6, 20 Jan 2019;
3, 17 Feb 2019;
3, 31 Mar 2019



7-NIGHT EASTERN CARIBBEAN

Departing from Fort Lauderdale, Florida

Day	Visiting
1	Fort Lauderdale, Florida
2	At sea
3	San Juan, Puerto Rico
4	Tortola, British Virgin Islands
5	Philipsburg, St. Maarten
6	At sea
7	At sea
8	Fort Lauderdale, Florida

Sailing dates
16 Dec 2018;
13, 27 Jan 2019;
10, 24 Feb 2019;
10, 24 Mar 2019;
7, 21 Apr 2019

7-NIGHT WESTERN CARIBBEAN PRE-EASTER

Departing from Fort Lauderdale, Florida

Day	Visiting
1	Fort Lauderdale, Florida
2	Key West, Florida
3	At sea
4	George Town, Grand Cayman
5	Cozumel, Mexico
6	Costa Maya, Mexico
7	At sea
8	Fort Lauderdale, Florida

Sailing dates
14 Apr 2019

7-NIGHT EASTERN CARIBBEAN CHRISTMAS & NEW YEAR

Departing from Fort Lauderdale, Florida

Day	Visiting
1	Fort Lauderdale, Florida
2	At sea
3	At sea
4	Philipsburg, St. Maarten
5	Charlotte Amalie, St. Thomas
6	At sea
7	Nassau, Bahamas
8	Fort Lauderdale, Florida

Sailing dates
23 Dec 2019
30 Dec 2019

Europe will never be the same again.

After spoiling you with the best of the Caribbean over winter we thought we'd then treat you to a choice of European itineraries for 2019, particularly throughout peak summer months. Set sail from Rome or Barcelona for some of Europe's most beautiful destinations on a blissful 7-, 10- or 11-night getaway. Don't forget, there's two brand new ports of call to look forward to: Nauplion on Greece's Argolis Peninsula and Santa Margherita on the Italian Riviera.

Or, if you'd rather begin your holiday even closer to home, why not be one of the first to **sail on Celebrity Edge direct from Southampton on an exclusive Iberian Peninsula sailing**. With three days at sea, it's the perfect opportunity to spend more time on board and really get to know the ship's revolutionary new amenities and venues. We recommend booking early for this one.



10-NIGHT IBERIAN PENINSULA

EXCLUSIVE SAILING FROM SOUTHAMPTON

Day	Visiting
1	Southampton, England
2	At sea
3	Bilbao, Spain
4	La Coruna, Spain
5	At sea
6	Lisbon, Portugal
7	Gibraltar, United Kingdom
8	At sea
9	Cagliari, Sardinia, Italy
10	At sea
11	Rome (Civitavecchia), Italy

2019 sailing dates
15 May

7-NIGHT BARCELONA TO ROME

Departing from
Barcelona, Spain

Day	Visiting
1	Barcelona, Spain
2	Valencia, Spain
3	Ibiza, Spain
4	At sea
5	Provence (Marseille), France
6	Nice (Villefranche), France
7	Florence/Pisa (La Spezia), Italy
8	Rome (Civitavecchia), Italy

2019 sailing dates
22 Jun;
6, 20 Jul;
3 Aug

7-NIGHT ROME TO BARCELONA

Departing from
Rome, Italy

Day	Visiting
1	Rome (Civitavecchia), Italy
2	Naples/Capri, Italy
3	At sea
4	Florence/Pisa (Livorno), Italy
5	Monte Carlo, Monaco
6	Cannes, France
7	Palma De Mallorca, Spain
8	Barcelona, Spain

2019 sailing dates
15, 29 Jun;
13, 27 Jul

11-NIGHT AMALFI COAST & GREEK ISLES

Departing from
Rome, Italy

Day	Visiting
1	Rome (Civitavecchia), Italy
2	Catania, Sicily, Italy
3	Valletta, Malta
4	At sea
5	Santorini, Greece
6	Athens (Piraeus), Greece
7	Mykonos, Greece
8	Nauplion, Greece – NEW
9	Katakolon, Greece
10	At sea
11	Naples/Capri, Italy
12	Rome (Civitavecchia), Italy

2019 sailing dates
25 May;
19 Aug;
9, 30 Sep;
21 Oct

10-NIGHT TREASURES OF THE WESTERN MED

Departing from
Rome, Italy

Day	Visiting
1	Rome (Civitavecchia), Italy
2	Naples/Capri, Italy
3	At sea
4	Palma De Mallorca, Spain
5	Barcelona, Spain
6	Barcelona, Spain
7	At sea
8	Monte Carlo, Monaco
9	Santa Margherita, Italy – NEW
10	Florence/Pisa (La Spezia), Italy
11	Rome (Civitavecchia), Italy

2019 sailing dates
5 Jun;
30 Aug;
20 Sep;
11 Oct

Penthouse Suite



Eden Café



The Rooftop Garden, day

Why Celebrity Cruises? We're the holiday with an Edge.

We've always been famed for our award-winning holidays, so why not let us take you on a journey unlike any other – one that's more than just setting sail on a choice of 13 multi-award-winning ships across 300 destinations. Our cruises will excite all of your senses – yes, you'll discover diverse new destinations, but it's how you reach them that makes a Celebrity Cruises® holiday different. And every day is different too.

Imagine starting your morning with an invigorating massage at our world-famous Canyon Ranch SpaClub®, setting you up nicely for an exciting adventure at your

next port of call. Back on board why not indulge in some speciality dining or take in a show you won't see anywhere else? Up on top deck there's plenty of space to relax with a cocktail under the stars. And, with one member of staff for every two guests, you can expect all the little touches that make such a difference on holiday.

Now, thanks to our first-in-the-industry accommodation; exhilarating entertainment; and partnership with globally renowned designers, Celebrity EdgeSM is about to take the Celebrity Cruises experience to an all-new level.

EVERYONE'S TALKING ABOUT CELEBRITY EDGE

All you could want from a luxury holiday and more.
But don't just take our word for it...

"This new cruise ship reimagines what it means to be outdoors"

— Bloomberg

"Architectural rules have been rewritten... and promises to be the envy of the business."

— Departures

"...cutting edge new vessel"

— Travel & Leisure

"The new 'Celebrity Edge' is a cruise ship like no other"

— harpersbazaar.co.uk



TRAVEL COMPANY
OF THE YEAR
LUXURY/SPECIALIST
CRUISE LINE OF THE YEAR
OCEAN CRUISE LINE
OF THE YEAR



TO JOIN THE REVOLUTION, CALL 0800 240 4307

VISIT CELEBRITYCRUISES.CO.UK/EDGE OR CONTACT YOUR TRAVEL AGENT



Celebrity **X** Cruises®
SAIL BEYOND BORDERS

Call 0800 240 4307
Visit celebritycruises.co.uk/edge
Contact your travel agent

For general booking conditions including advice on ATOL/ABTA protection, full promotion terms and conditions, applicable ships and sail dates, full promotion combinability restrictions, cancellation charges and other information, please refer to the Celebrity Cruises 2018-19 brochure, visit celebritycruises.co.uk or contact your travel agent. Brochure content, including ship information and itineraries, is subject to change and is correct at time of print. All images of Celebrity Edge are artistic renderings based on current development concepts, which are subject to change without notice. This promotion is sponsored by RCL Cruises Ltd t/a Celebrity Cruises (company number 07366612) with registered office address at Building 3, The Heights, Brooklands, Weybridge, Surrey KT13 0NY.

